

Schindler 9500 horizontal moving walk
Performance as needed,
efficiency as desired



The reliable solution for public transportation

Passenger safety, everyday

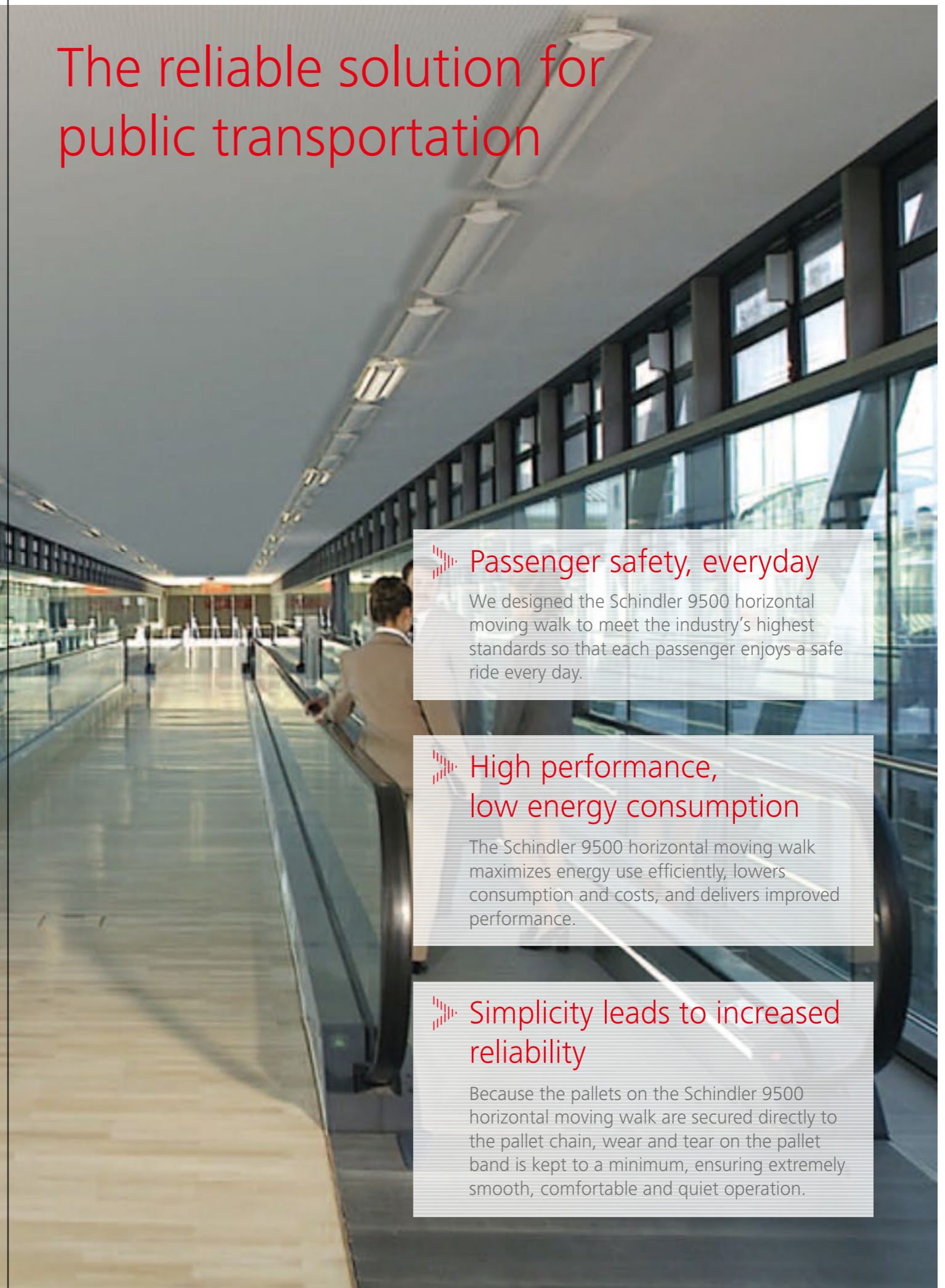
We designed the Schindler 9500 horizontal moving walk to meet the industry's highest standards so that each passenger enjoys a safe ride every day.

High performance, low energy consumption

The Schindler 9500 horizontal moving walk maximizes energy use efficiently, lowers consumption and costs, and delivers improved performance.

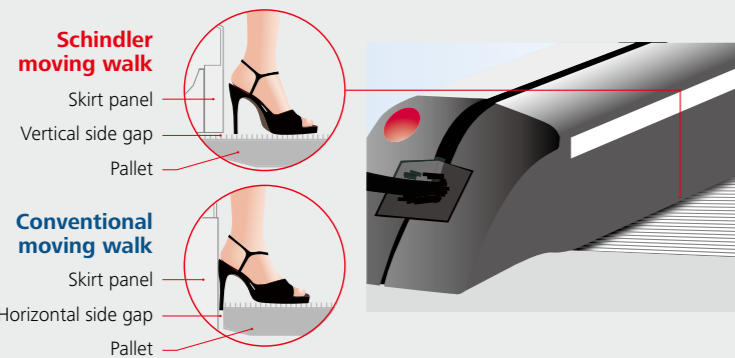
Simplicity leads to increased reliability

Because the pallets on the Schindler 9500 horizontal moving walk are secured directly to the pallet chain, wear and tear on the pallet band is kept to a minimum, ensuring extremely smooth, comfortable and quiet operation.



Passenger safety, everyday

The Schindler 9500 horizontal moving walk is a front runner when it comes to passenger safety: Its comprehensive active and passive safety equipment comprises 35 system-relevant safety features, both mechanical and electrical. This ensures a safe ride for each passenger.



Maximum safety against wedging shoes: Schindler's unique safety feature

The pallets' sides run underneath the skirt panels, eliminating the horizontal side gap which is found in conventional products, making the Schindler design 25 times safer with respect to pinching and wedging than conventional moving walk designs.

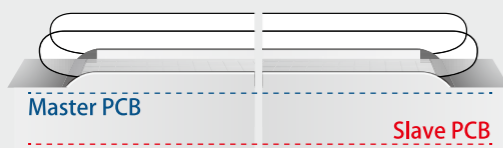
MICONIC F: Intelligent microprocessor controller

Two independent safety circuits control each safety device in real time. Dual safety checks mean double the safety: a unique safety feature from Schindler.

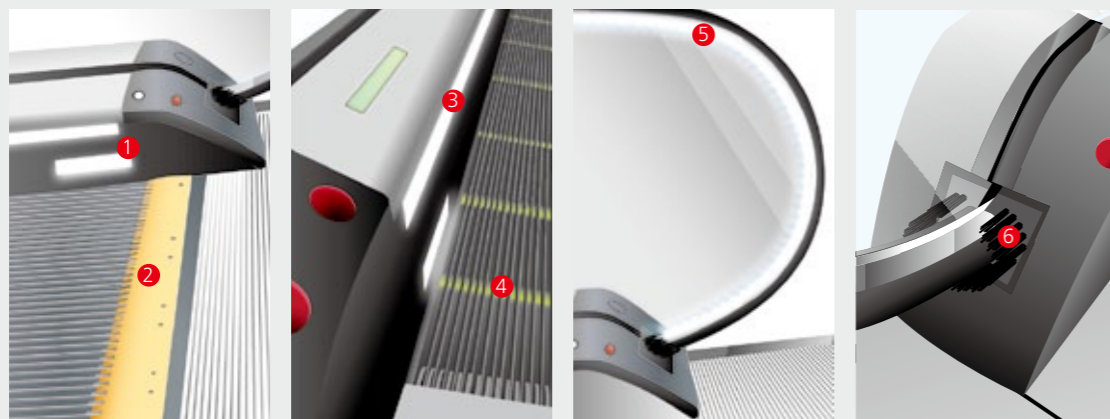
Visual safety features: safety you can see

The Schindler 9500 is designed with illuminated risk zones so that passengers can see what's ahead:

- 1 Combplate lighting
- 2 Comb line
- 3 Skirt lighting
- 4 Pallet gap lighting
- 5 Balustrade lighting
- 6 Handrail entry brush

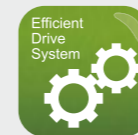


Would you like more information on safety and efficiency? Please consult the Schindler escalator safety brochure and energy brochure.



High performance, low energy consumption

The Schindler 9500 features three design solutions that increase energy efficiency: more efficient drive systems, components requiring less power, and intelligent power management software. We call it the Schindler E³ energy-saving approach.



E1 – Efficient drive system

With the latest drive technology, the Schindler Premium Power Package increases total drive efficiency by 23%.



E2 – ECOLINE power management

Schindler's ECOLINE power management reduces power consumption by up to 40% over conventional continuous operation systems.



E3 – Ecological design

Schindler aluminum pallets

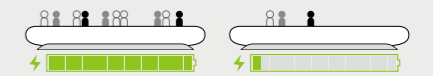
Schindler moving walks with aluminum pallets reduce overall weight compared to conventional steel pallets, i.e., a 50 m long Schindler moving walk has 2000 kg less weight to pull. This leads to greater efficiency.

Schindler LED lighting

Use of LED lights reduces energy consumption by up to 80% and extends lifetime by 100%.

23%
↑
Total drive efficiency

Power consumption
↓
40%



Weight
↓
40%

Aluminum

↑
Efficiency
5%

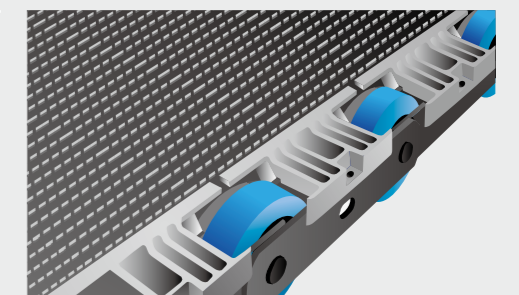
Energy consumption
↓
80%

LED Light

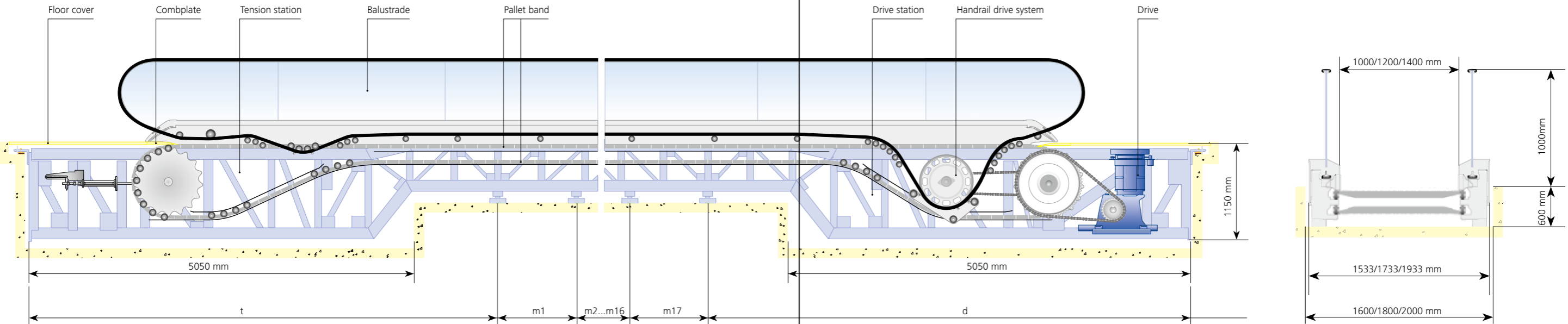
↑
Extended lifetime
100%

Simplicity leads to increased reliability

The pallets of the Schindler 9500 horizontal moving walk are directly secured to the pallet chain, which reduces wear and tear on the pallet band while providing extremely smooth, comfortable and quiet operation.



Everything according to plan



Support distance [mm]		Pallet width [mm]		
		1000	1200	1400
t	min	5900	5900	5900
	max	11500	11000	10500
d	min	5900	5900	5900
	max	11500	11000	10500
m1 - m17	min	5751	5501	5251
	max	11500	11000	10500

The Schindler 9500 horizontal moving walk has a flexible setting for intermediate supports. The distance between two adjacent intermediate supports ranges up to 11,500 mm. This maximized flexibility means the Schindler 9500 horizontal moving walks fits readily into the building's existing structural support. With widths of up to 1400 mm, the Schindler 9500 horizontal moving walk is ideal for meeting the passenger demand and public transportation requirements at airports, convention centers and other facilities.

Parameters	Unit	Description
Inclination	degree	0 ~ 6
Installation length	[m]	Max 100 m at an inclination of 0°
Pallet width	[mm]	1000, 1200, 1400
Balustrade design	-	E type, slim design
Balustrade height	[mm]	1000
Pit depth	[mm]	Middle section: 600 Top/bottom section: 1150
Speed	[m/s]	0.45, 0.5, 0.6, 0.65, 0.75

Schindler 9500

We are always close by.

Please contact one of the following addresses:

Brunei

Schindler Liftec Sdn. Bhd.
Unit B8, 1st Floor, Kompleks Setia Kenangan
Kg. Kiulap, Mukim Gadong
Bandar Seri Begawan BE 1518
Negara Brunei Darussalam
Telephone + 673 2 236 515
 + 673 2 236 516
Fax + 673 2 236 470
info@bn.schindler.com

Cambodia

Jardine Schindler (Cambodia) Ltd.
No.315, Monivong Blvd, 22nd Floor, Canadia Tower
Phnom Penh, Kingdom of Cambodia
Telephone + 855 23 431 013
Fax + 855 23 431 014
info@kh.schindler.com

Hong Kong

Schindler Lifts (Hong Kong) Ltd.
29th Floor, Devon House, Taikoo Place, 979 King's Road
Quarry Bay, Hong Kong
Telephone + 852 2516 8168
Fax + 852 2516 6026
info@hk.schindler.com

Indonesia

P.T. Berca Schindler Lifts
Menara Rajawali
2nd Floor, Jl DR. Ide Anak Agung Gde
Agung Lot 5.1
Kawasan Mega Kuningan
12950 Jakarta, Indonesia
Telephone + 62 21 576 1476
Fax + 62 21 576 1844
info@id.schindler.com
Website www.schindler.co.id

Macau

Jardine Schindler Lifts (Macao) Ltd.
No. 398, Alameda Dr. Carlos
D Assumpcao Edificio CNAC
9-andar-G & H, Macau
Telephone + 853 2875 7953
Fax + 853 2883 7264
info@hk.schindler.com

Malaysia

Antah Schindler Sdn Bhd (3837-H)
8th Floor, Bangunan TH Uptown 3
No. 3 Jalan SS 21/39, Damansara Uptown
47400 Petaling Jaya, Selangor D Ehsan, Malaysia
Telephone + 60 3 7725 1818
Fax + 60 3 7725 1181
info@my.schindler.com
Website www.schindler.my

Myanmar

Myanmar Jardine Schindler Ltd.
No 1/4, Parami Road, Hlaing Township
Yangon, Myanmar
Telephone + 95 1 654 855
 + 95 1 654 356
Fax + 95 1 654 854

Philippines

Jardine Schindler Elevator Corporation
8th Floor, Pacific Star Building, Corner Sen. Gil Puyat Avenue
and Makati Avenue, Makati City, Philippines
Telephone + 63 2 811 5438
Fax + 63 2 843 1419
info@ph.schindler.com
Website www.schindler.ph

Singapore

Schindler Lifts (Singapore) Pte. Ltd.
1 Kaki Bukit View No. 04-18/26, Techview
Singapore 415941
Telephone + 65 6854 7888
Fax + 65 6846 2212
info@sg.schindler.com
Website www.schindler.sg

Taiwan

Jardine Schindler Lifts Ltd.
9th Floor, 35 Kwang Fu South Road
Taipei 105, Taiwan, R.O.C.
Telephone + 886 2 2528 6626
Fax + 886 2 2528 6656
info@tw.schindler.com
Website www.schindler.tw

Thailand

Jardine Schindler (Thai) Ltd.
20th Floor, Times Square Building, 246 Sukhumvit Road
Klongtoey, Bangkok 10110, Thailand
Telephone + 66 2 685 1600
Fax + 66 2 685 1601
info@th.schindler.com
Website www.schindler.co.th

Vietnam

Schindler Vietnam Ltd.
8th Floor, President Place, 93 Nguyen Du Street
Ben Nghe Ward, District 1, Ho Chi Minh City, Vietnam
Telephone + 84 8 3521 4890
Fax + 84 8 3821 3382
info@vn.schindler.com
Website www.schindler.vn

Or visit our website:

www.jardineschindler.com

Disclaimer

The specifications, options and colors expressed within this brochure are indicative only and are subject to change without notice. They are not intended to, and do not, constitute an offer on the part of the Jardine Schindler Group.